

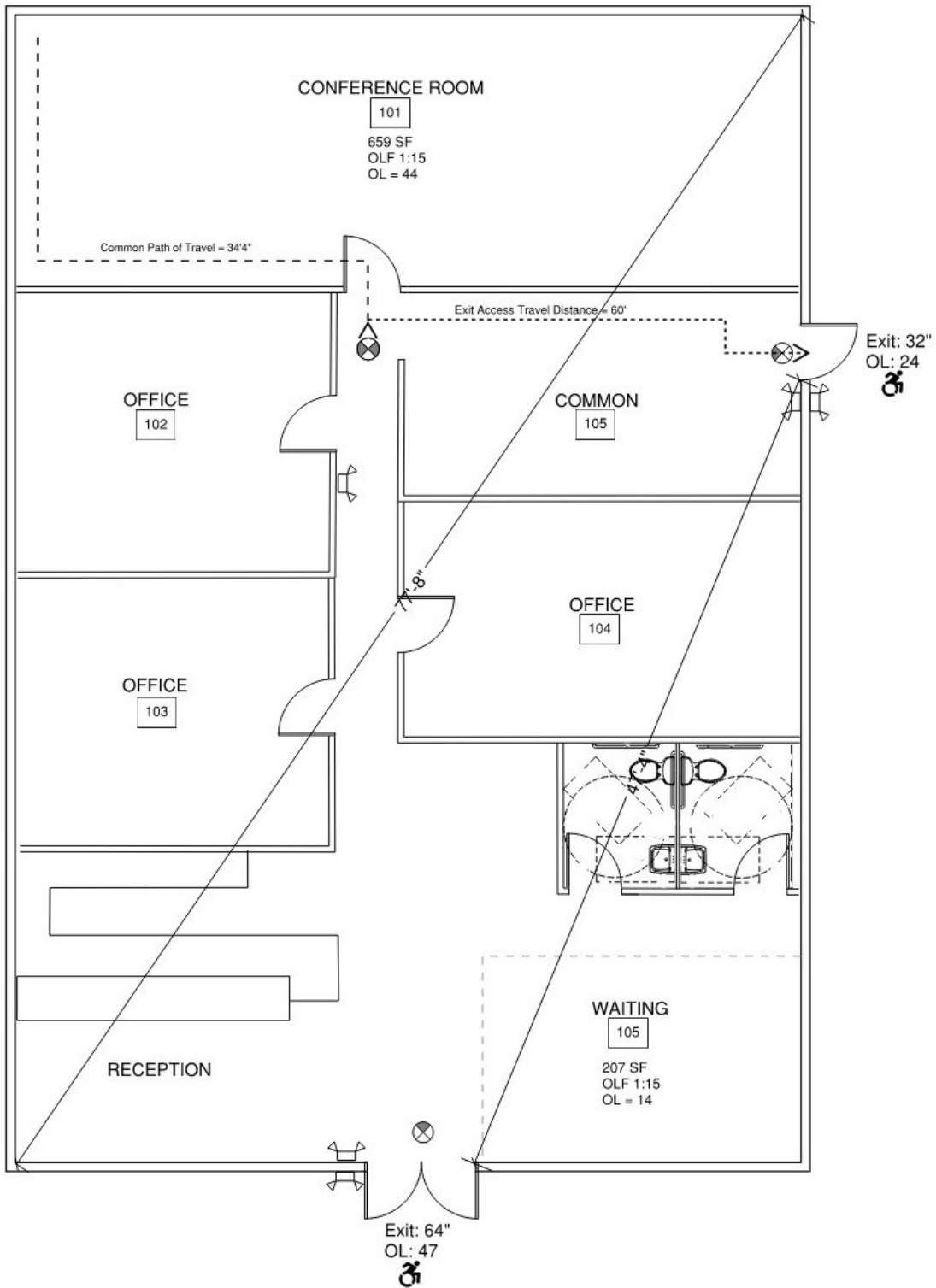
LIFE SAFETY PLAN

A Life Safety Plan (LSP) is required for all commercial projects intended for occupancy (not to include foundation only, super structure, or core/shell) where two or more means of egress are required due to occupant load or travel distance. This is to be a separate plan from the Architectural Floor Plan, as they serve two different functions. The information presented on the LSP shall be sealed by the design professional of record and shall address the following requirements:

- Specify occupancy(s)
- Specify separated or non-separated occupancies
- Provide complete allowable area calculations to include all equations and sum-of-ratios when applicable (*not required for remodels only*)
- Indicate incidental use areas and separation requirements
- Specify total occupant load of building, or space, with an occupant load breakdown per usage
- Specify egress width requirements for all exit elements
- Specify maximum travel distance (absolute longest distance from most remote point in the building or space to the nearest exit)
- Specify maximum common path of travel (longest distance of travel before there is a choice of two or more exits from the building or space)
- Indicate all exits
- Specify longest diagonal distance and separation of exits distance
- Specify locations and lengths of dead end corridors
- Show accessible entrances and exits (as applicable)
- Locate all card reader or control access locations
- Clearly identify the following on the plan, with hourly requirements, as applicable:
 - ⇒ Fire Walls
 - ⇒ Fire Barriers
 - ⇒ Fire Partitions
 - ⇒ Smoke Barriers
 - ⇒ Smoke Partitions
- Provide proposed listing reference for all rated assemblies (GA, UL, etc.)
- Identify shafts, interior exit stairs, exit passageways, corridors, etc.
- Specify if building is sprinklered or not, and indicate what type of system is being used

EXAMPLE ON PAGE 2

LIFE SAFETY PLAN EXAMPLE



Type of Construction:	VB	Egress width required (.20):	14.2"
Sprinklers:	No	Egress Width Provided:	96"
Occupancy Classification:	B	Required Separation of Exits:	38'7" (77'8"/2)
Mixed occupancies:	No	Exit Separation Provided:	47'4"
Allowable Area:	9000 (NS)	No Rated Construction Requirements	
Actual Area:	2786		
Incidental Uses:	No	Accessible Entrance/Exit:	
Total Occupant Load:	71	Exit Sign:	
866 s.f. Assembly (1:15):	58	Emergency Lighting:	
1920 s.f. Office (1:150):	13		