

January 4, 2018



ENTECH
ENGINEERING, INC.

505 ELKTON DRIVE
COLORADO SPRINGS, CO 80907
PHONE (719) 531-5599
FAX (719) 531-5238

Elite Properties of America, Inc.
6385 Corporate Drive, Suite 200
Colorado Springs, CO 80919

Attn: Kathryn Derr

Re: Structural Analysis– Truss D1 Hanger to Girder D4GE
Model 885.2–Elevation D (30# and 40#)
Colorado Springs, Colorado

Dear Ms. Derr:

As requested, personnel of Entech Engineering, Inc. reviewed the hangers for the referenced model and elevation connecting trusses D1 to girder D4GE. The hanger for those connections shall be a Simpson HUS26.

We trust this has provided you with the information you required. If you have any questions or need additional information, please do not hesitate to contact us.

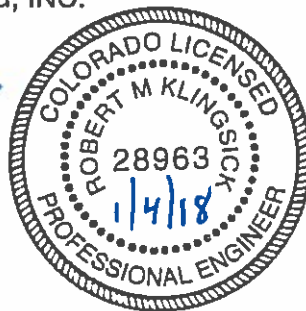
Respectfully Submitted,

ENTECH ENGINEERING, INC.

Bob M. Klingsick, P.E.
Senior Engineer

RMK/bk

Entech Job No. 170299
AAMasters/2017/170299 sa – D1 Hgr to D4GE





ENTECH
ENGINEERING, INC.

505 ELKTON DRIVE
COLORADO SPRINGS, CO 80907
PHONE (719) 531-5599
FAX (719) 531-5238

June 20, 2017

Elite Properties of America, Inc.
6385 Corporate Drive, Suite 200
Colorado Springs, CO 80919

Attn: Kathryn Derr

Re: Structural Analysis – Master Bathroom – Optional Expanded Shower
Model 885.2– All Elevations (30#)
Colorado Springs, Colorado

Dear Ms. Derr:

As requested, personnel of Entech Engineering, Inc. performed structural analysis for the window headers in the Master Bathroom (see Figure 1). The purpose of our analysis was to determine adequate header sizes and the proper trimmers and king studs for the windows.

1. 4016 FIX window: (2) 2x10 headers with (2) 2x6 trimmers and (2) 2x6 kings stud at each end.
2. 2030 SH window: (2) 2x8 headers with (1) 2x6 trimmer and (1) 2x6 stud at each end.

Remaining structural components shall be installed per the structural plans. The maximum permitted dead and snow loads shall not exceed 15 psf and 30 psf, respectively.

We trust this has provided you with the information you required. If you have any questions or need additional information, please do not hesitate to contact us.

Respectfully Submitted,

ENTECH ENGINEERING, INC.

Tae Y. Yang

TYY/crf

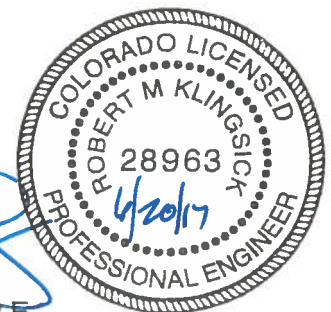
Encl.

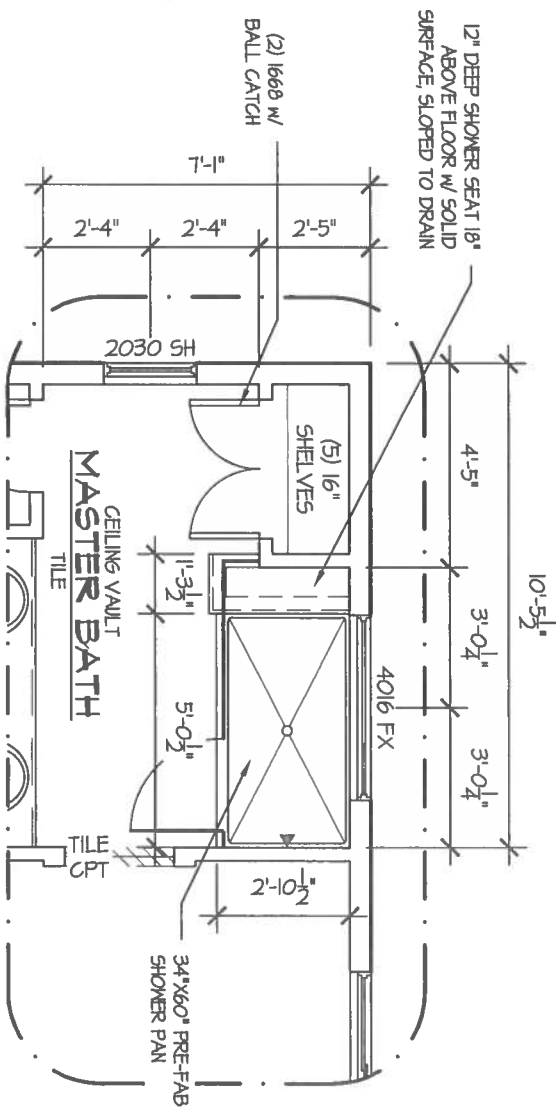
Entech Job No. 170299

AAMasters/2017/170299 sa – Master Bathroom (30#)

Reviewed by:

Bob M. Klingsick, P.E.
Senior Engineer





Master Bathroom -

4
2.2

Optional Expanded Shower

SCALE: 1/4" = 1'-0"

Figure 1