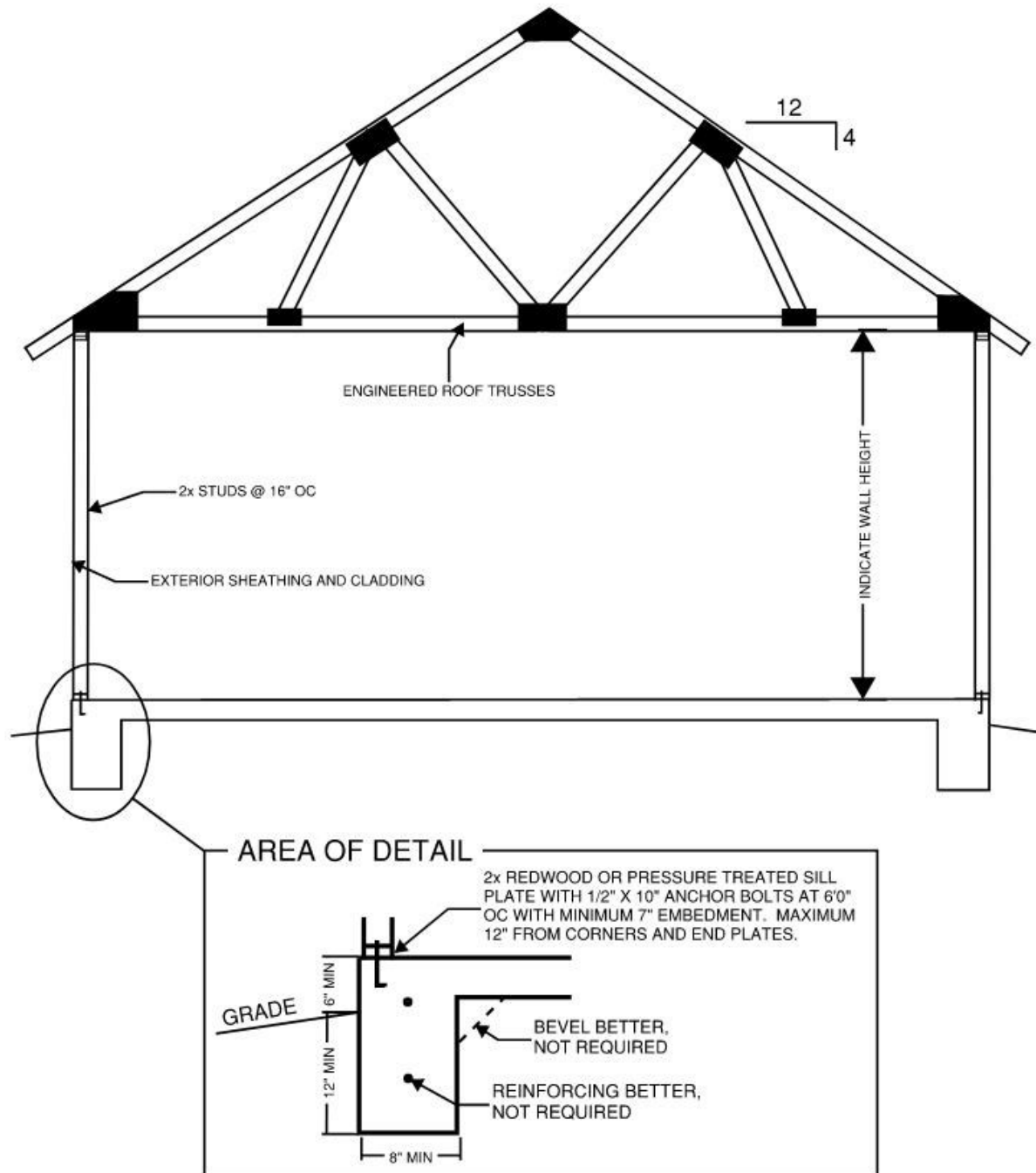


# Pikes Peak REGIONAL Building Department

## MONOLITHIC FOUNDATION REQUIREMENTS



### REQUIREMENTS FOR USE

- Structure must be less than 750 square feet
- Structure must be enclosed
- Structure must be single story (less than 12' wall height), without a loft
- Foundation must not retain soil
- Foundation must be poured concrete, of a single pour, without cold joints
- Foundation cannot have columns or pads in the slab area